

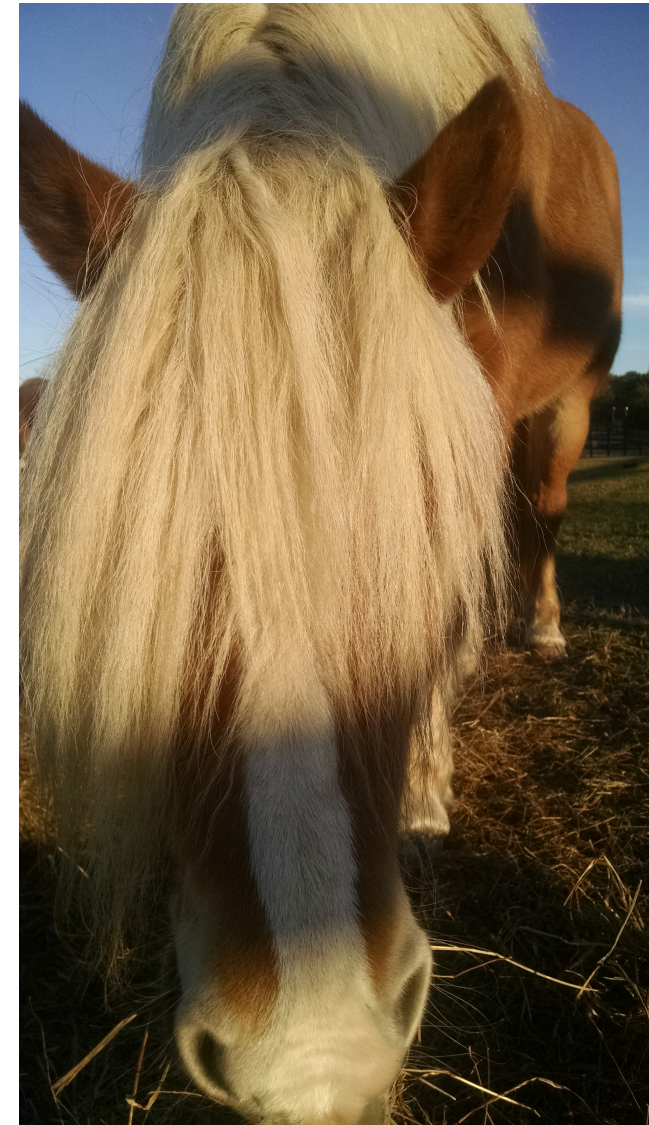
SIS in the Field

<https://anss-sis.scsn.org/sis/>

Philip Crotwell
South Carolina Seismic Network



**Who here does:
...SIS In field?
...or back home?
...or what is SIS?**



Reasons To...

- Prompt metadata
- Harder to forget
- Enter the change as you make it



Reasons Not To...

- Prompt metadata, “*maybe too prompt*”
- Harder to forget, “*like I need more to do on site*”
- Enter the change as you make it, “*oops, that didn’t work, put it back*”
- Internet Access, “*not in my field!*”





Some days are happy days...



“What do you mean there is no configured logger?”



But someday's ain't!

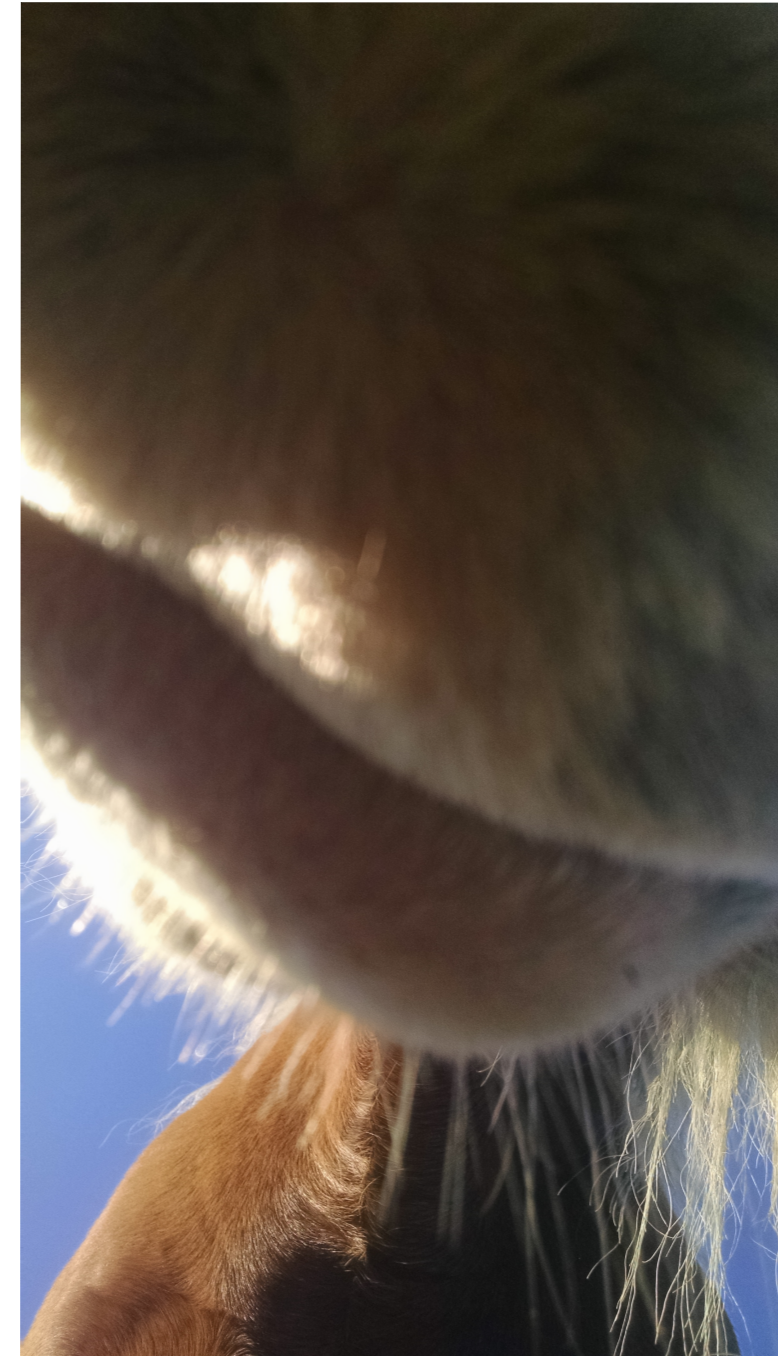


...compared to how we used to create metadata.



Pain points?

- “now” button!!!
- window large on small field laptop
- no field specific web page (lots of options)
- 3 field action pages
- need to pre-configure logger,
- templates, templates and more templates
- logger config \longleftrightarrow SIS (...I wish)
- ???



Feedback....



<https://anss-sis.scsn.org/sis/>

Thank you...

